

<b>ASIGNATURA</b>	<b>INGLÉS</b>	<b>NIVEL</b>	<b>4º</b>
<b>UNIDAD</b>	Time for school	<b>OA Nº</b>	OA 1-14
<b>OBJETIVO DE LA GUIA.</b>	Hacer y responder preguntas sobre las asignaturas	<b>INDICADORES DE EVALUACION.</b>	Identifican la hora Leen un horario Contestan preguntas
<b>INSTRUCCIONES PARA EL DESARROLLO DE LA GUIA.</b>		<b>A) Mira los relojes y encierra en un círculo la hora correspondiente.</b> <b>B) Mira el horario</b> <b>C) Responde las preguntas Cuándo y A qué hora tienes las asignaturas de acuerdo al horario de la letra B</b> <b>Conéctate a la clase vía whatsapp</b> el día y hora que te corresponde y aclara tus dudas El número es: +56 989705059 <b>Envía tus respuestas al correo:</b> <a href="mailto:cefaingles20@gmail.com">cefaingles20@gmail.com</a>	
<b>GUIA Nº 6</b>	<b>FECHA: 30-03 de julio</b>	<b>NOMBRE DE LA GUIA</b>	What time have you got?

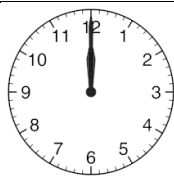
**NAME:** \_\_\_\_\_

**GRADE: 4º** \_\_\_\_\_

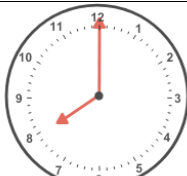
**WORKSHEET 6**

Ahora vamos a estudiar la hora exacta y a que hora tienen las diferentes asignaturas. Recordamos la clase on line y vemos y leemos las páginas 11,12 y 13

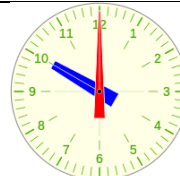
**A) LOOK AT THE CLOCKS AND CIRCLE THE CORRECT TIME**



1. a) It's two o'clock  
b) It's seven o'clock  
c) It's twelve o'clock



2. a) It's eight o'clock  
b) It's one o'clock  
c) It's six o'clock



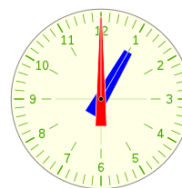
3. a) It's two o'clock  
b) It's six o'clock  
c) It's ten o'clock



4. a) It's two o'clock  
b) It's seven o'clock  
c) It's five o'clock



5. a) It's one o'clock  
b) It's three o'clock  
c) It's nine o'clock



6. a) It's eleven o'clock  
b) It's five o'clock  
c) It's one o'clock

**B) LOOK AT THE SCHEDULE**

	<b>MONDAY</b>	<b>TUESDAY</b>	<b>WEDNESDAY</b>	<b>THURSDAY</b>	<b>FRIDAY</b>
<b>9.00</b>	SCIENCE	ENGLISH	ART	SPANISH	MATHS
<b>10.00</b>	SCIENCE	ENGLISH	ART	SPANISH	MATHS
<b>11.00</b>	Physical E	MATHS	SCIENCE	Physical E	MUSIC
<b>12.00</b>	Physical E	MATHS	SCIENCE	Physical E	MUSIC

**C) ANSWER THE QUESTIONS ACCORDING TO THE SCHEDULE**

Key words: What= Qué When= Cuando What time= A qué hora

7. **When** have you got Science?

- a) On Tuesday and Friday
- b) On Thursday and Friday
- c) On Monday and Wednesday.

8. When have you got Art?

- a) On Tuesday
- b) On Wednesday
- c) On Monday

9. When have you got Music?

- a) On Thursday
- b) On Tuesday
- c) On Friday

10. **What time** have you got English?

- a) At nine and ten
- b) At eleven and twelve
- c) At ten and eleven

11. What time have you got Music?

- a) At nine and ten
- b) At ten and eleven
- c) At eleven and twelve

12. What time have you got Spanish?

- a) At nine and ten
- b) At ten and eleven
- c) At eleven and twelve

13. What time have you got Art?

- a) At nine and ten
- b) At ten and eleven
- c) At eleven and twelve